



Lancashire,
Manchester &
N Merseyside

Urban **RED**evelopment

The evolution a local Red Squirrel group



Lancashire,
Manchester &
N Merseyside

What are we looking for?

We are a long established but small group.

We have reached a point where our original members are looking to hand over the work to a new generation.

How do we continue our red squirrel conservation work?

What changes could we make?



Group History



Lancashire,
Manchester &
N Merseyside

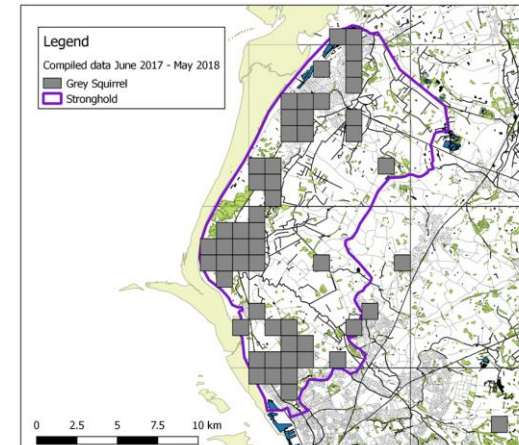
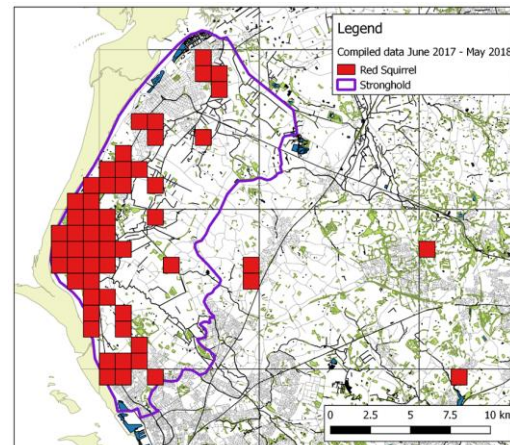
- Red Alert Merseyside started in the mid 90s with separate groups
- The Ormskirk folded in the late 90s after a squirrel pox outbreak wiped out the local population
- Crosby later merged with Formby & Southport
- Now covering most of Sefton
- Strong local ties



Lancashire,
Manchester &
N Merseyside

What about the Red Squirrels?

- A popular destination for visitors to see red squirrel
- Red squirrels were present throughout the area until the mid 90s
- Several major pox outbreaks
- Designated a Stronghold in 2005
- Now seeing an increase in sightings outside the stronghold

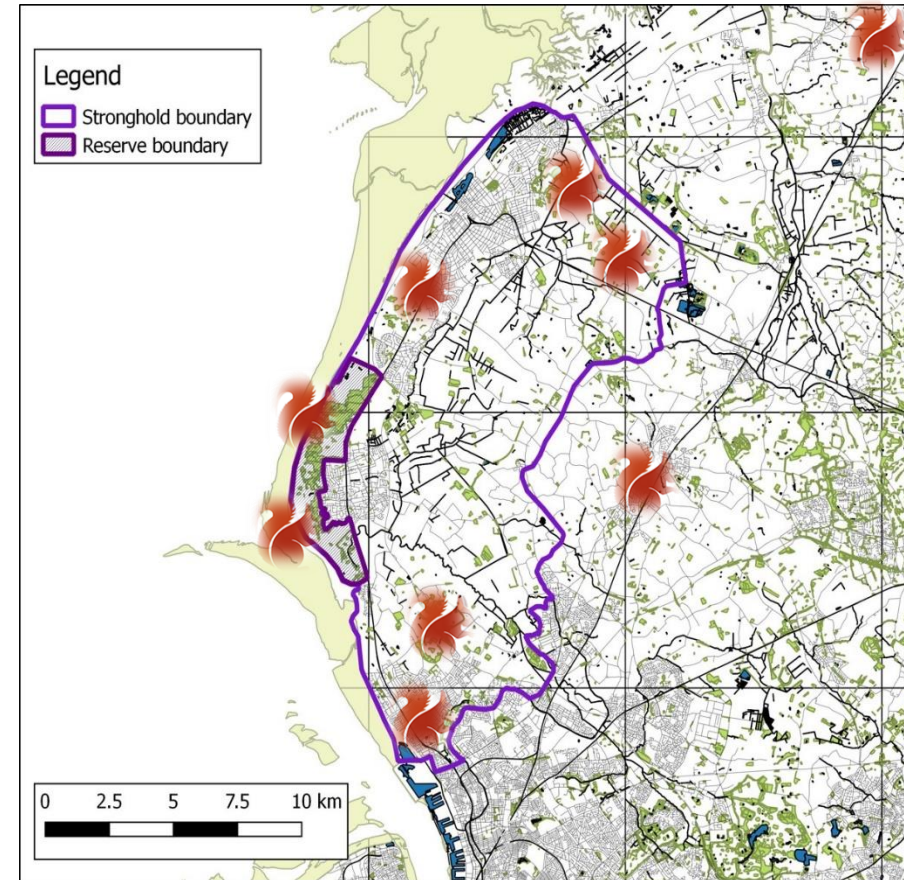


Local Geography

- The wider landscape
 - High Population
 - Not an ideal habitat for squirrels
- In the Stronghold
 - The Reserve
 - The Stronghold
 - Community Support
- A Fragmented red squirrel population
- Urban Development is a fact of life



Lancashire,
Manchester &
N Merseyside



Challenges

- Was there a point in continuing?
- Status quo vs. Change
- Ageing Membership
- Community Complacency
- Funding
- Misinformation
- Local Developments (Housing, Fracking etc.)



Lancashire,
Manchester &
N Merseyside

Now: Red Alert Lancashire and Merseyside

- Becoming a Constituted Group
- Affiliation with LWT
- Adopted a constitution
- Voted in a new Committee
- New name, new logo
- Practicalities
 - What type of group?
 - The Constitution
 - Funding
 - Training
 - Defining ourselves



Lancashire,
Manchester &
N Merseyside